

Hygrostats with mechanically operated sensors

For installation in conduits or switch cabinets – Design Uni II / Pikolo





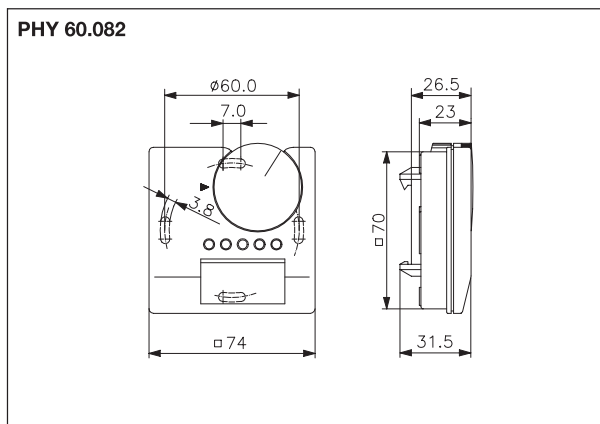
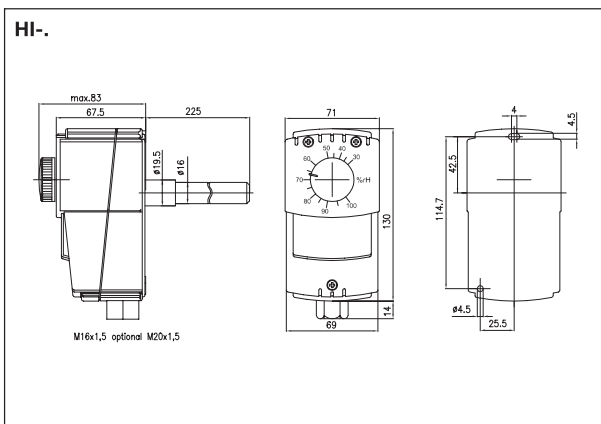
Technical data	HI	PHY	Application
Switching voltage:	24 ... 250 V~; > 24 V, in dry, VDE 0110 compliant rooms only		HI Specially suited for the control or supervision of the atmospheric moisture in ventilation ducts and air conditioning conduits, climatic exposure test cabinets and dehumidification devices employed in the industrial and agricultural sphere. Inappropriate for use in aggressive gases. Max. air velocity 8 m/sec. or 15 m/sec. when using a protective sensor sleeve (FS-HI).
Sensor:	synthetic fibres		
Switching capacity:			
Dehumidifying:	15 (8) A	5 (0.2) A	
Humidifying:	15 (8) A	2 (0.2) A	
Contact:	1 / 2 changeover contact	changeover contact	
Minimum load:	min. 150 mA at 24 V ~	min. 100 mA at 24 V ~	
Setting ranges:	30 ... 100 % r.h.		
Switching difference:	approx. 5 % r.h.	approx. 4 % r.h.	
Measuring accuracy:	± 3.5 % r.h. (> 50 % r.h.) ± 4 % r.h. (< 50 % r.h.)	± 3 % r.h. (at 50 % r.h.)	
Degree of protection:	IP 65	IP 30	PHY Specially suited for the supervision and control of the moisture content inside of switch cabinets , automatic machines, etc. and for the protection of electrical and / or electronic components against the influence of moisture.
Protection class:	II, after according installation		
Storage temperature:	-20 ... +60°C		
Ambient temperature:	0 ... 60°C	10 ... 60°C	
Housing colour:	grey (similar to RAL 7035 / 7016)	grey (similar to RAL 7035)	
Housing material:	ABS		
Mounting / installation:	inside of conduits	on standard rail	
Weight:	approx. 370 g	approx. 85 g	
Electrical connections:	terminal screws		

Model / Picture	Item No.	Equipment	Circuit diagram	PG
	JA 010100	External setting		B
	JA 010200	Internal setting		B
	JA 010300	External setting - 2 stages (difference between the stages adjustable within a range from 3 ... 15 % r.h., factory setting > 6 % r.h.)		B
	A 261004	External setting – can be connected from outside – specially suited for installation in switch cabinets		A

Hygrostats with mechanically operated sensors

For installation in conduits or switch cabinets – Design Uni II / Pikolo

Accessories / options			PG
JZ-20-1	E 6130144	Wall suspension element for HI	K
			
FS-HI	H 530975	Protective sensor sleeve for HI	K
			
Screwed cable gland M 20 x 1.5 (standard: M 16 x 1.5) for HI possible if desired			B



Air Conditioning Technology